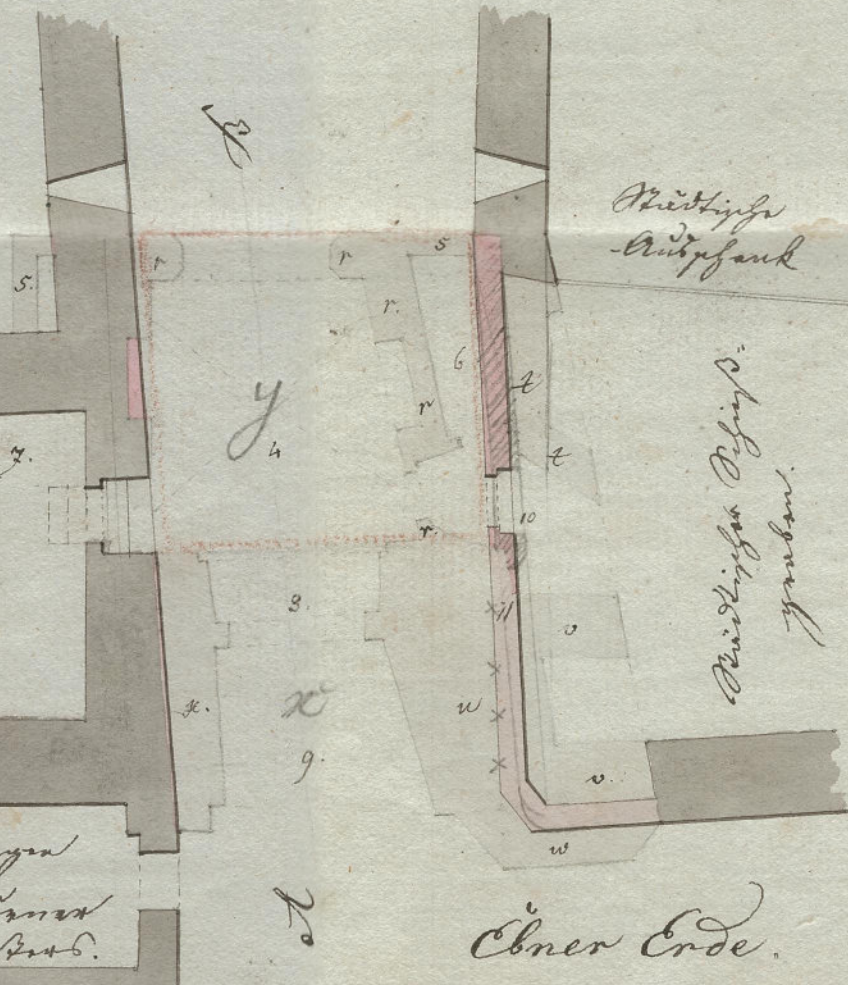
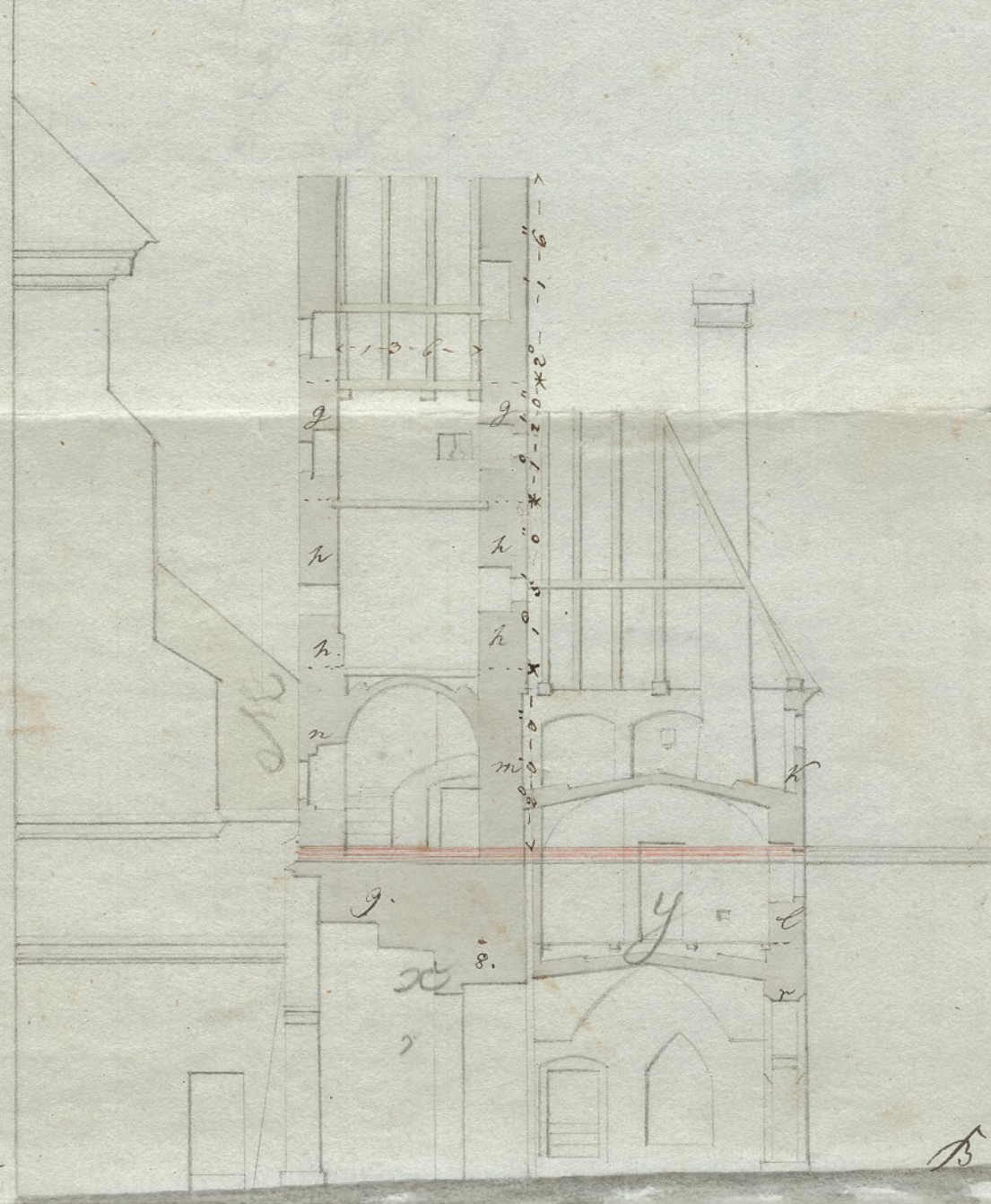
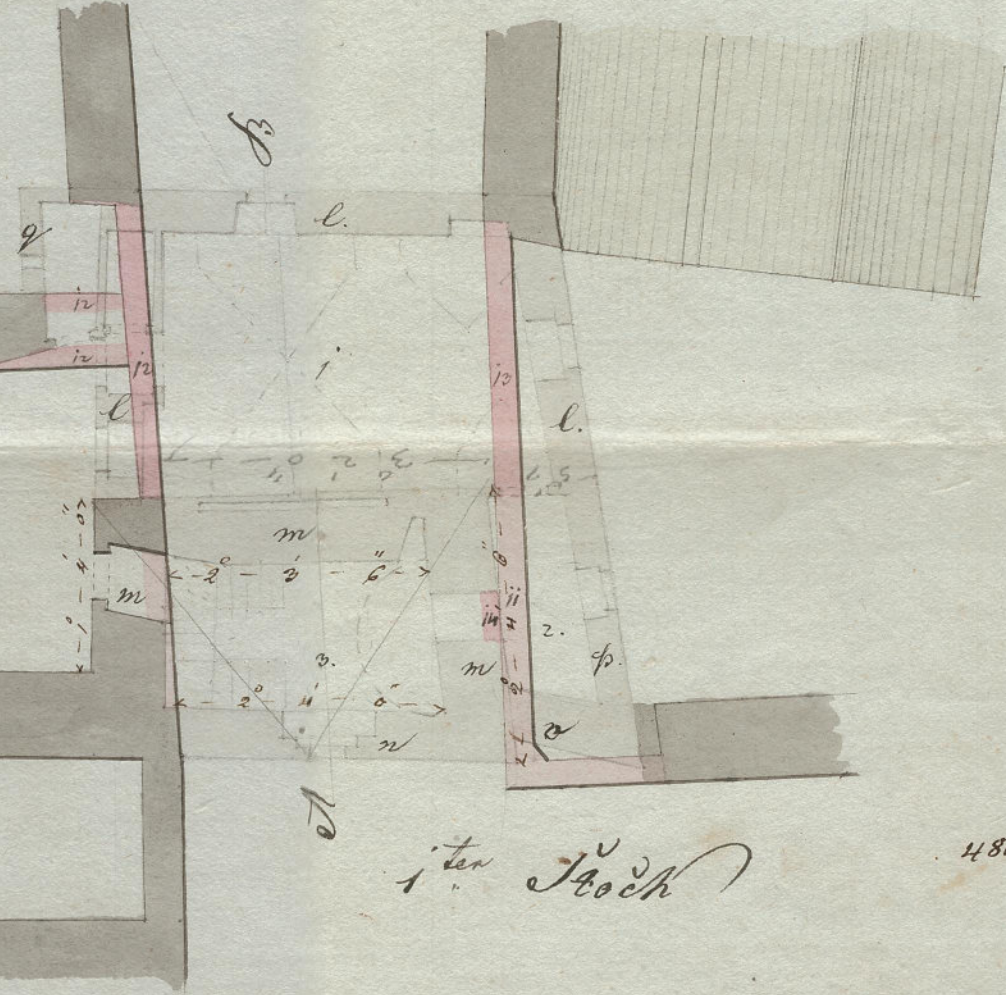
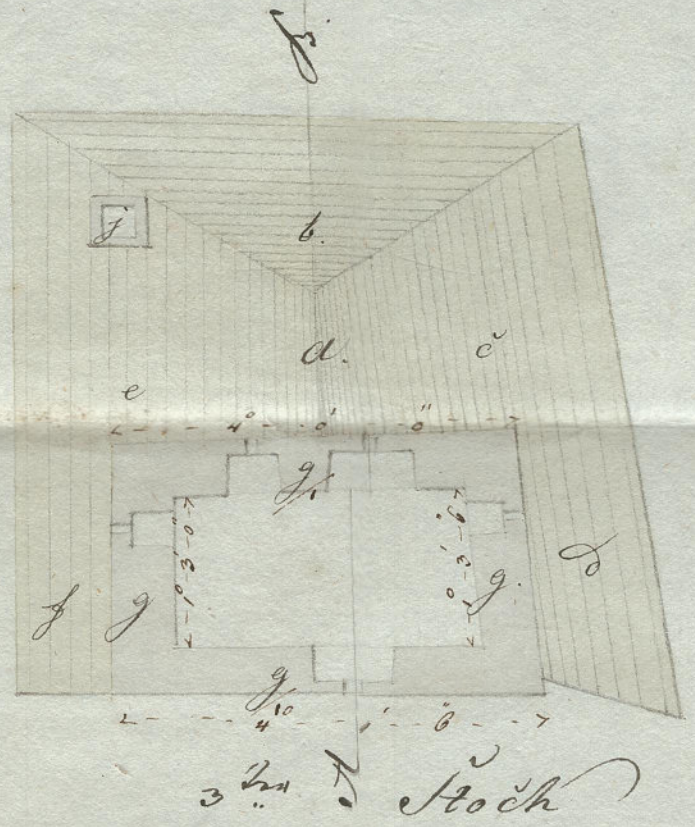
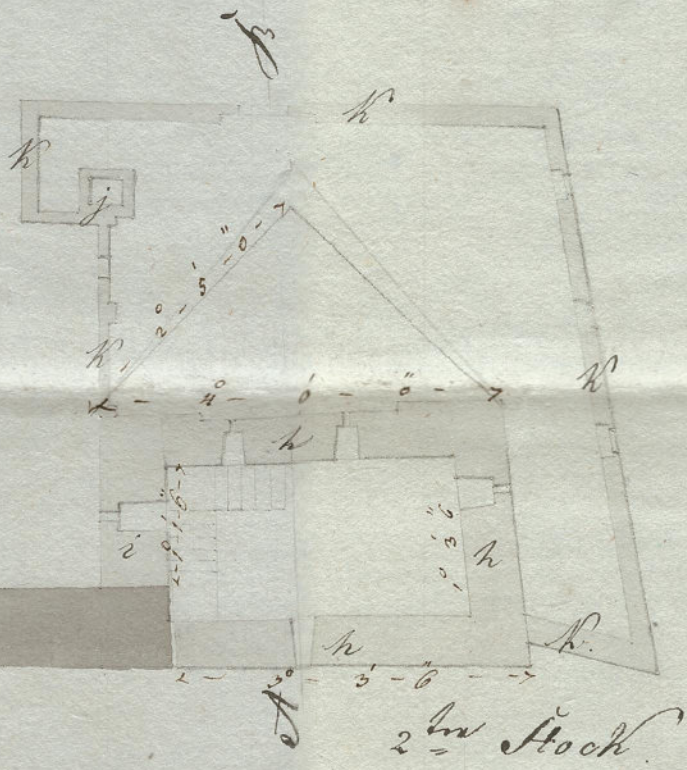


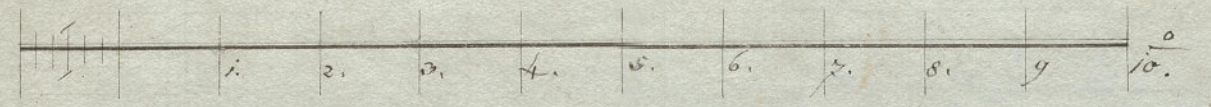
Plan No. I.

Zum jüngeren Abtragung des Städtischen Gilgenbergs müßte das Marktzustände zu
Westwärts im Ob. Öst.



Karl Schützwieser

Carl Schützwieser



Goldlager
des St. Johann

Goldlager
des St. Johann
m. d. St. J.

Städtische
Anstalt

Städtische
Anstalt

Ebner Erde

1858