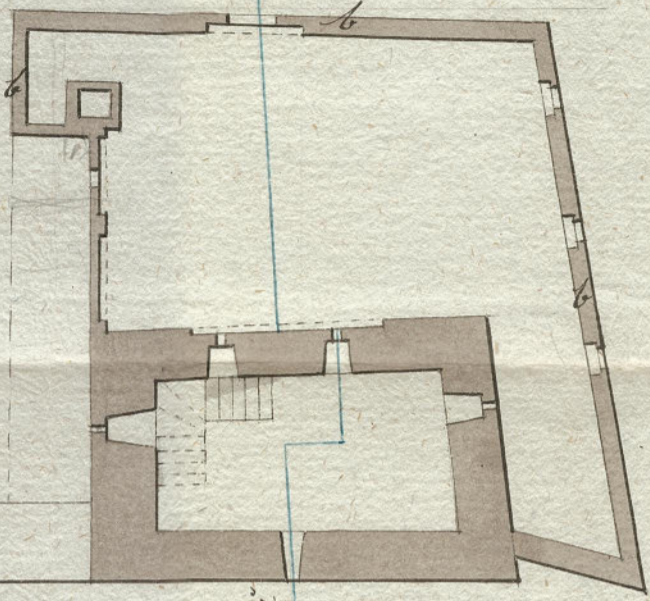
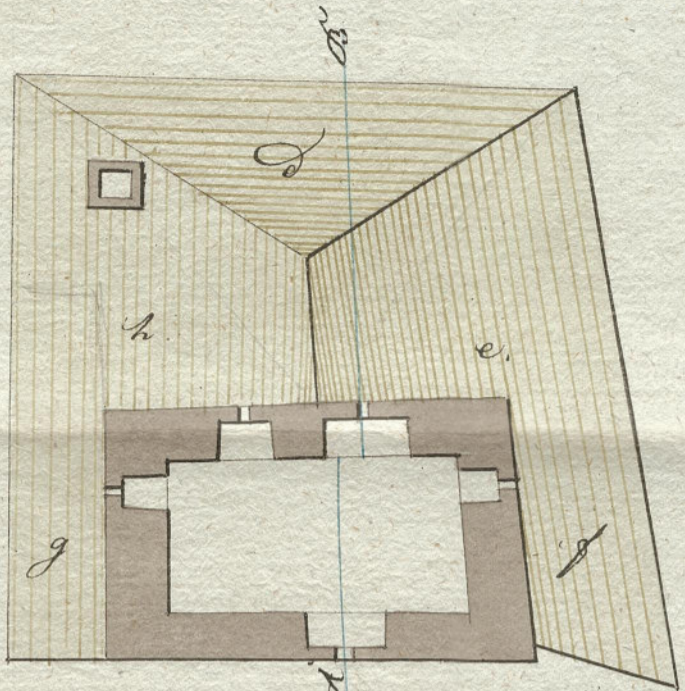


# Plan N. II.

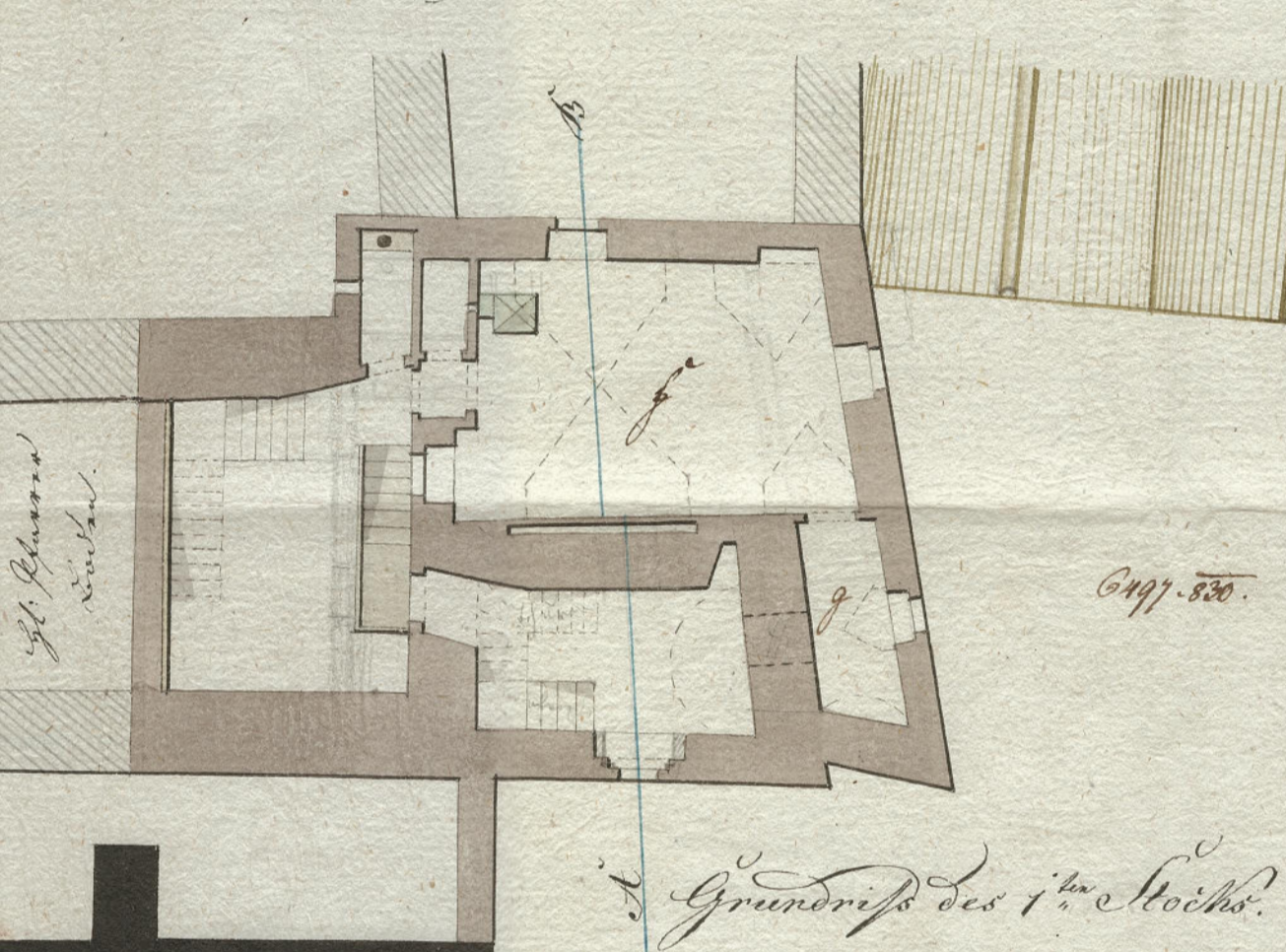
Plan von dem mulligen Hofe im Jahre 1830. Das sogenannte Kuchenhof Gilgenhof mußte der  
 Kuchenhof = Hof zu Markt Platz in Oben Ostwärts das dritte Viertel.



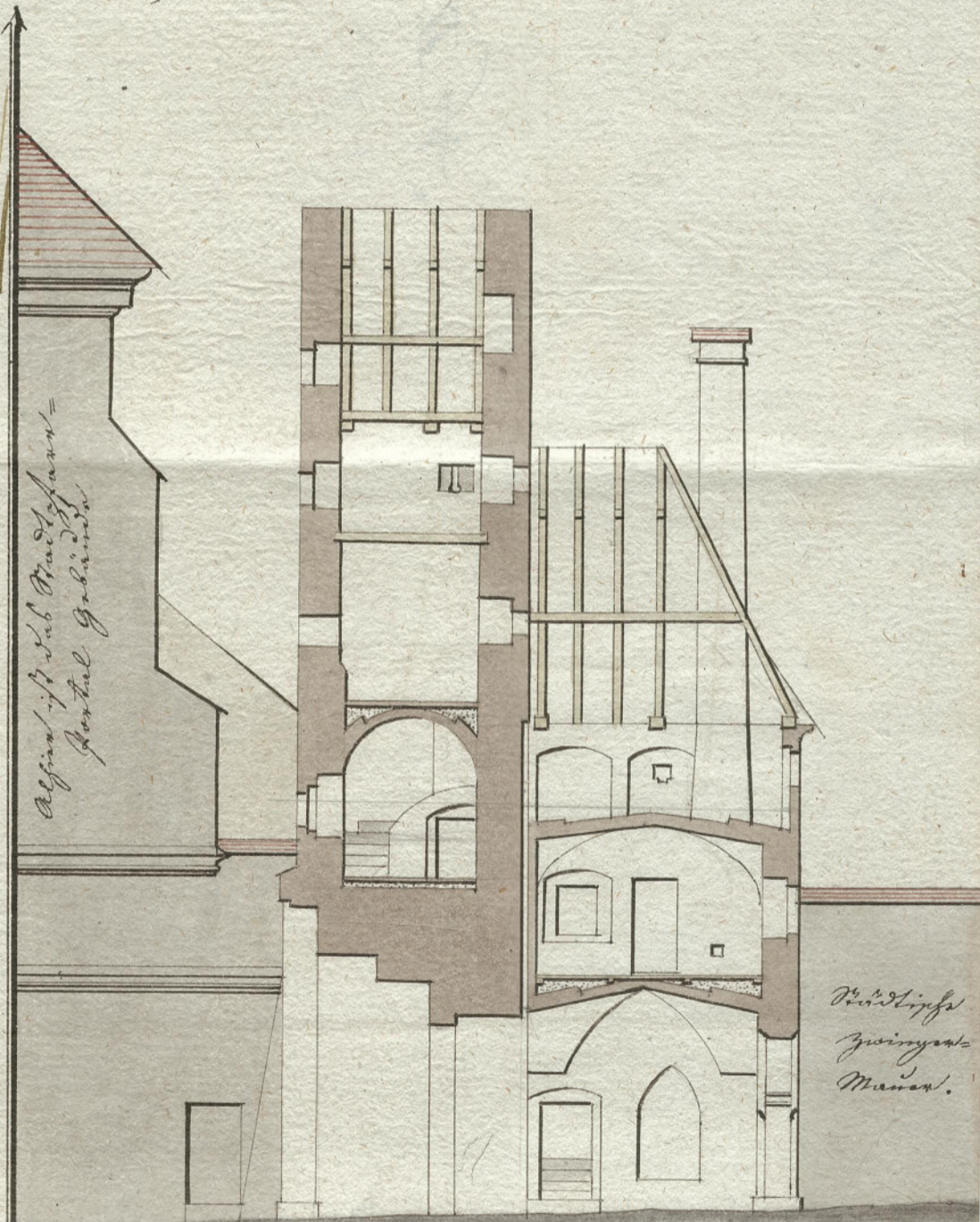
Grundriß des 2<sup>ten</sup> Stockes.



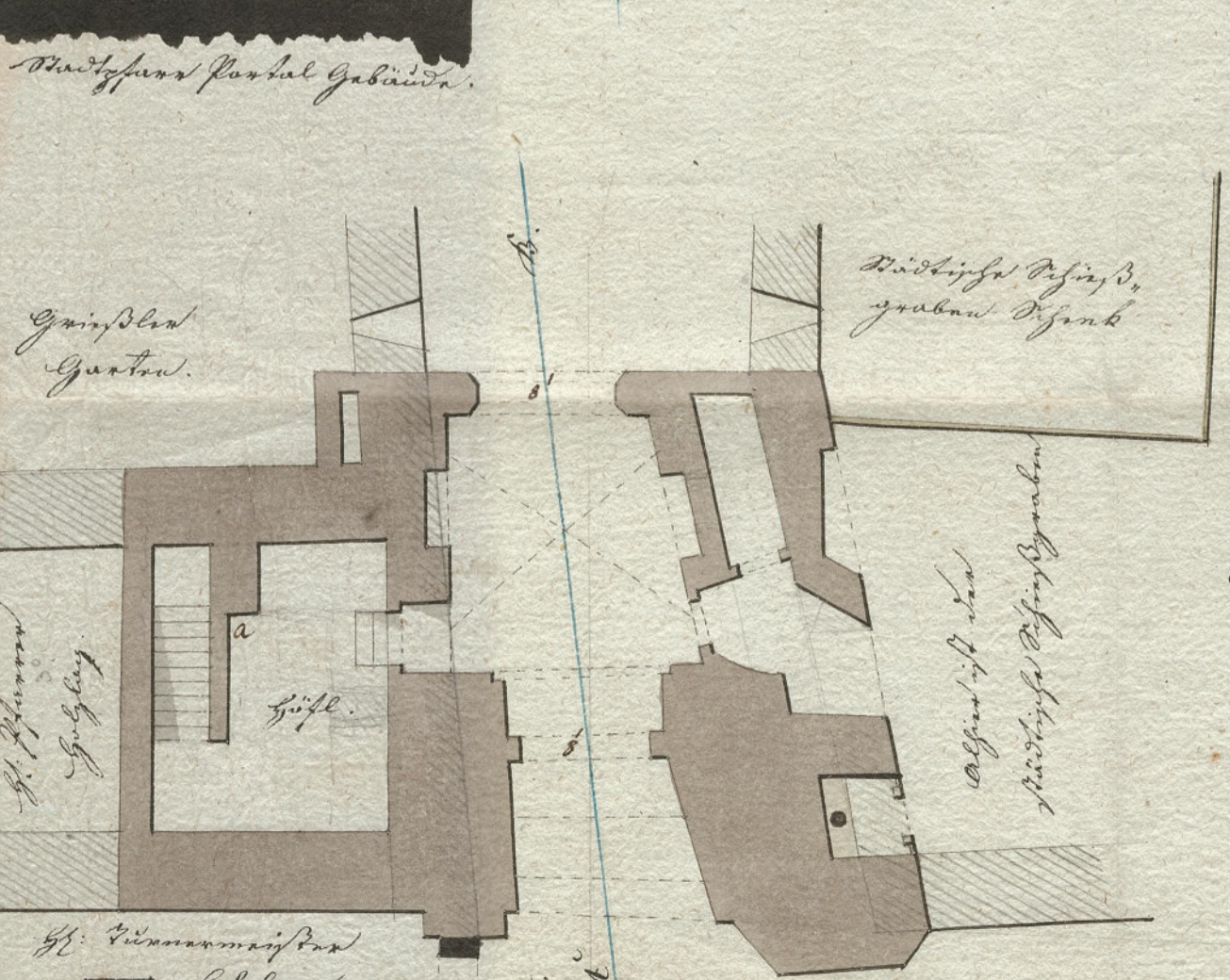
Grundriß des 3<sup>ten</sup> Stockes.



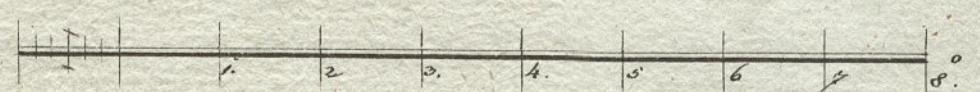
Grundriß des 1<sup>ten</sup> Stockes.



Profil nach der Linie A-B.



Grundriß zu ebner Erde



Bauhof  
 Bauverwaltung